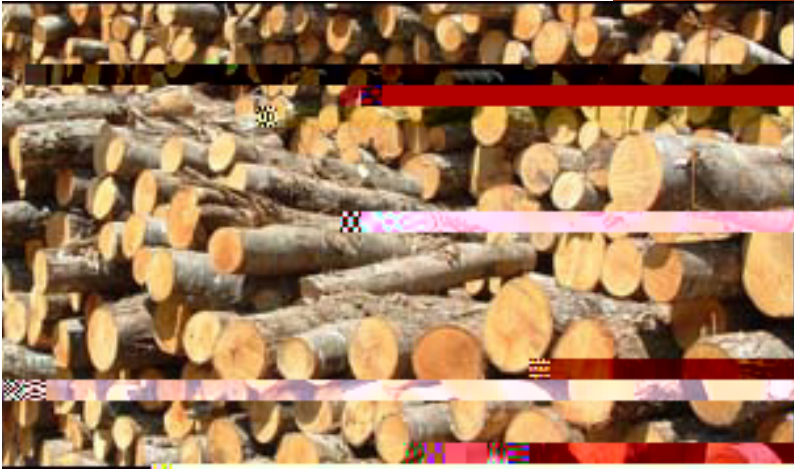
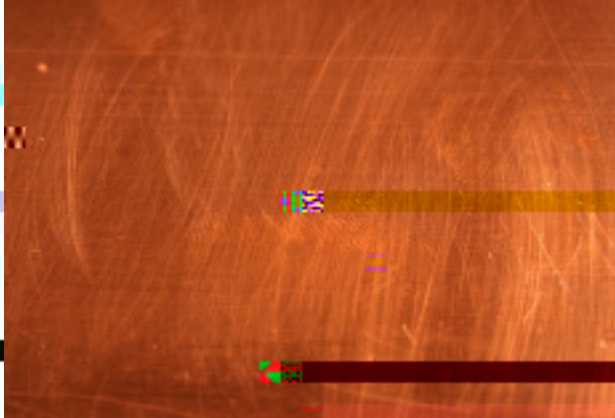
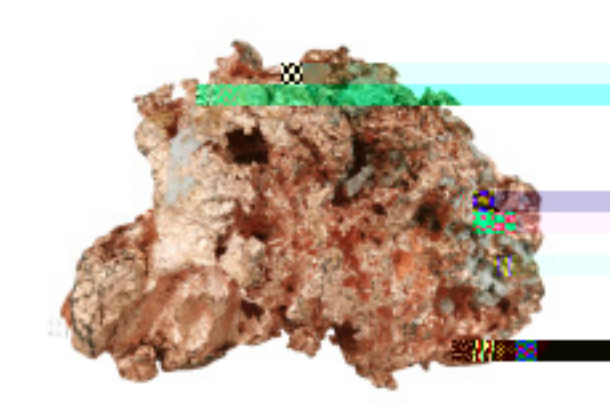




5 " # - & 0 ' \$ 0 / 5 & / 5 4



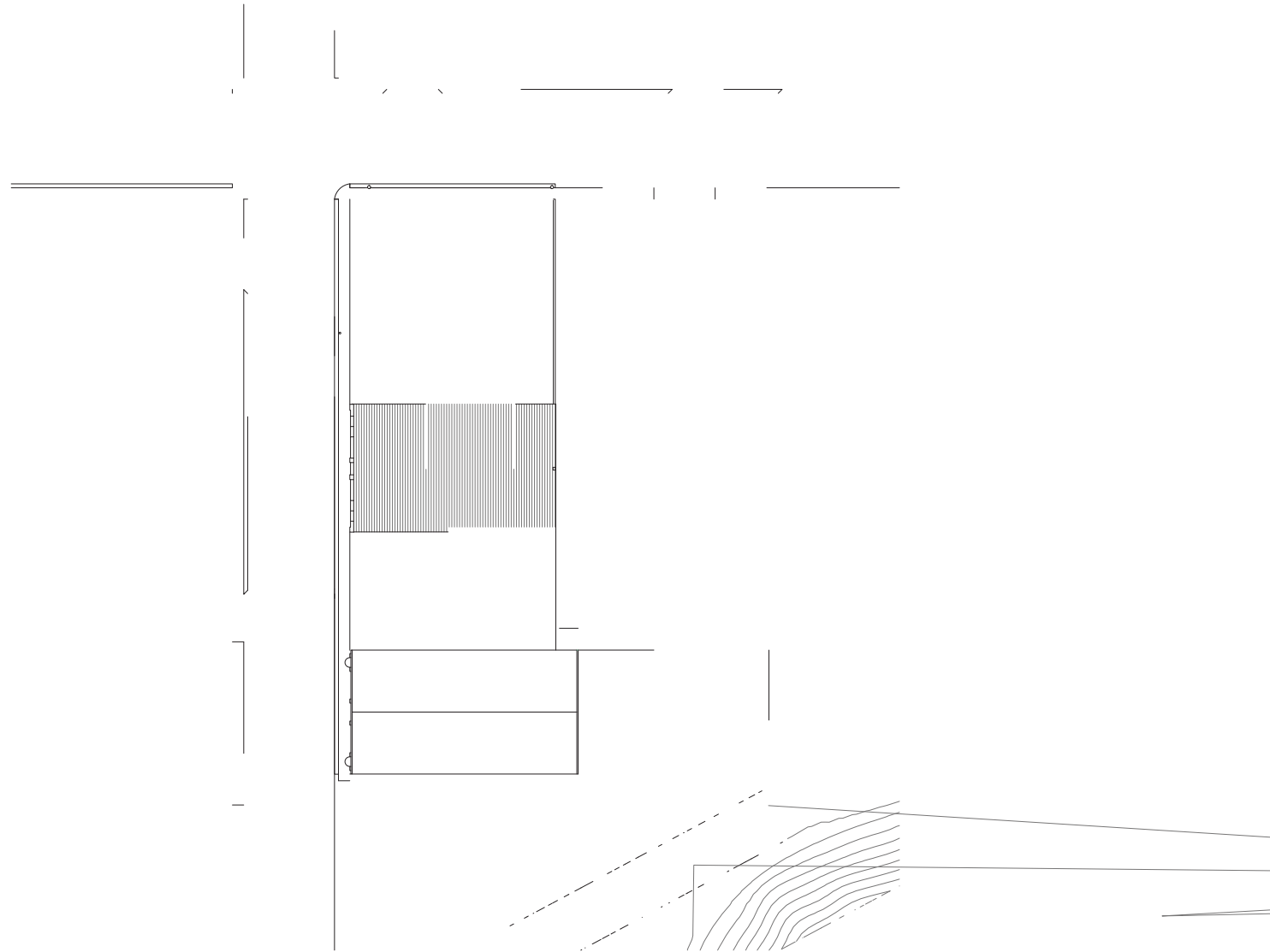
"SDIJUFDUVSBM 'MPPSQMBO  
#VJMEJOH 4FDUJPO  
\$PODFQU  
\$POTUSVDUJPO "OBMZTJT  
\$POTUSVDUJPO %FUBJMJOH  
\$POTUSVDUJPO &TUJNBUFT  
\$POTUSVDUJPO 4DIFEVMF  
&MFWBUJPOT  
&YUFSJPS 3FOEFSFE  
'VSOJUVSF 1MBO  
\*OUFSJPS 3FOEFSFE  
-FFE  
-JHIUJOH  
4JHOBHF 8BZGJOEJOH  
4JUF 1MBO  
4JUF -PHJTUJDT  
5FYU



4XFFUHVN #SFXJQH \$PPPLJOH UP QMBOU  
JUT SPPUT JO 4UBSLWJMMF .4 CZ DSFBUJOH UIFJS  
GJSTU NJDSPCSFXFSZ MPDBUJPO " NJDSPCSFXFSZ  
GPDVTFT PO UIF BSU PG DSFBUJOH DSBGU CSFXT UIBU  
DPODFOUSBUF PO RVBMJUZ BOE GMBWPS 5IF CSFXJOH  
UFDIOJRVF CFHJOT XJUI UIF OBUVSBM JOHSFEJFOUT  
TVDI BT CBSMFZ BOE UIFUO UISPVHI B TFSJFT PG  
USBOTGPSNBUJPOT BOE NBOJQVMBUJPOT JT TIBQFE  
JOUP B TJHOBUVSF CSFX 5IJT USBOTGPSNBUJPO  
PG SPVHI SBX JOHSFEJFOUT JOUP B SFGJOFE MJRVJE  
SFRVJSFT FYUFOTJWF FOFSHZ BOE TLJMM 5P  
DBQJUBMJ[F PO UIJT USBOTGPSNBUJPO UIF FYUFSJPS  
PG UIF CVJMEJOH XJMM CF JO TUBSL DPOUSBTU UP UIF

@

# 5 & 1 - " /

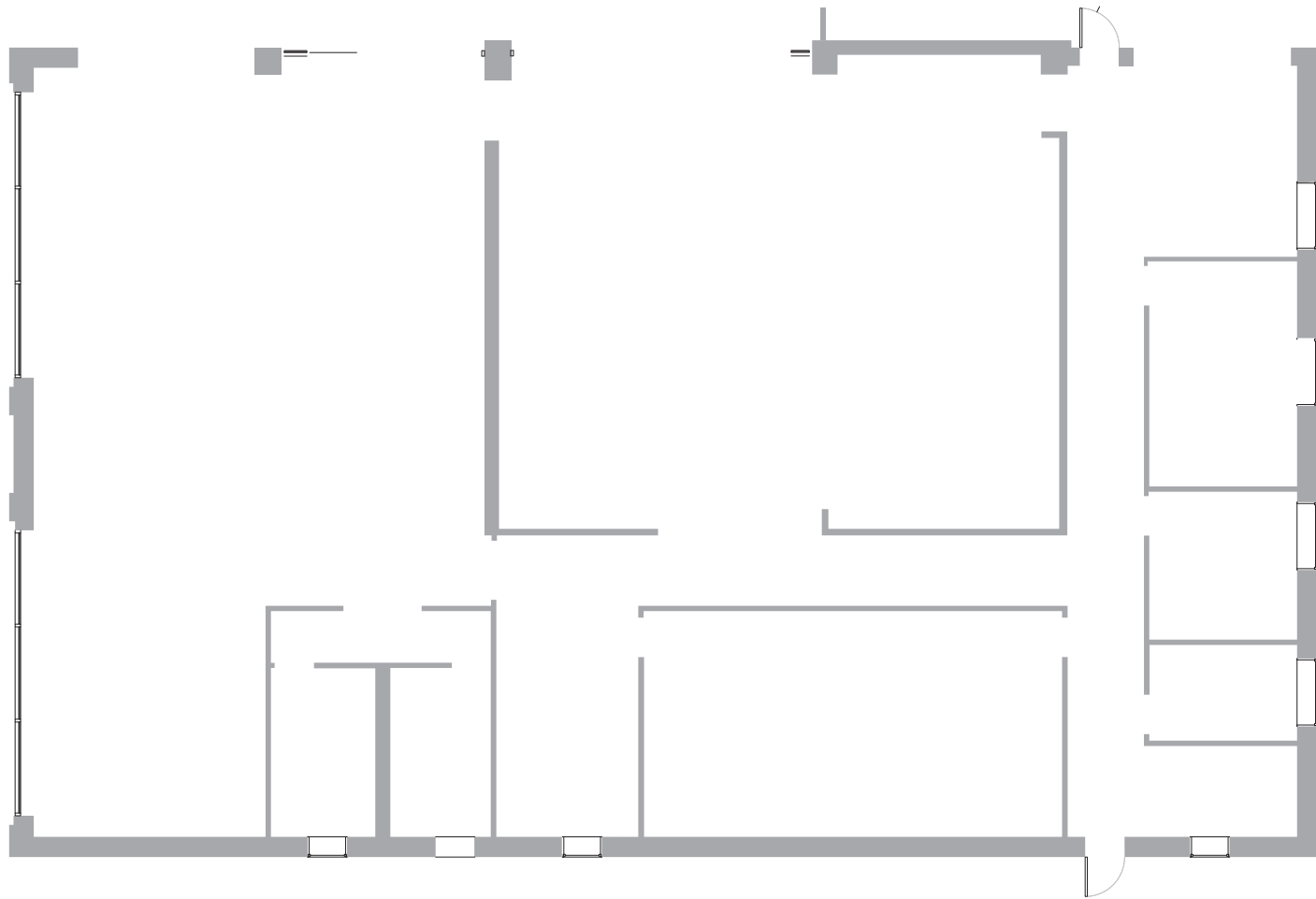




" 3 \$ ) \* 5 & \$ 5 6 3 " - ' - 0 0 3 1 - " /

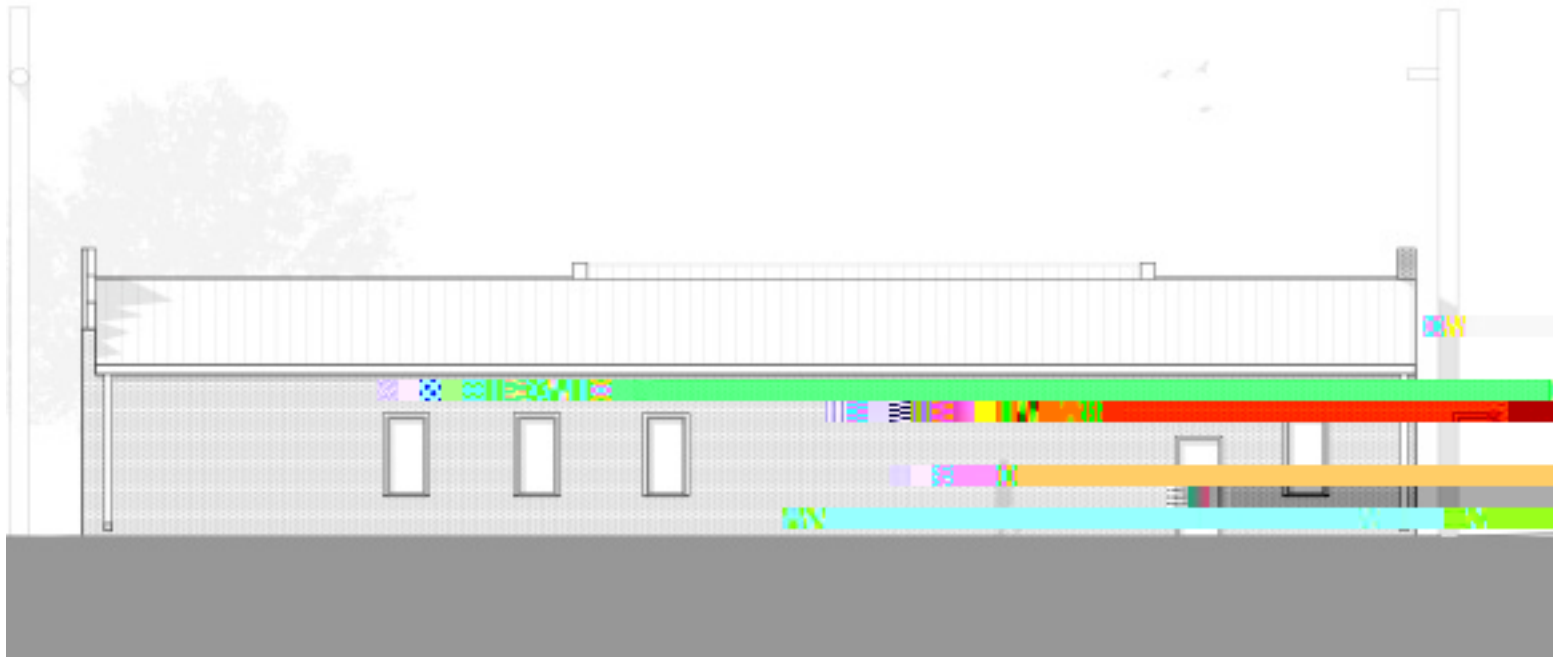








4 P V U I & M F W B U  
4 D B M F





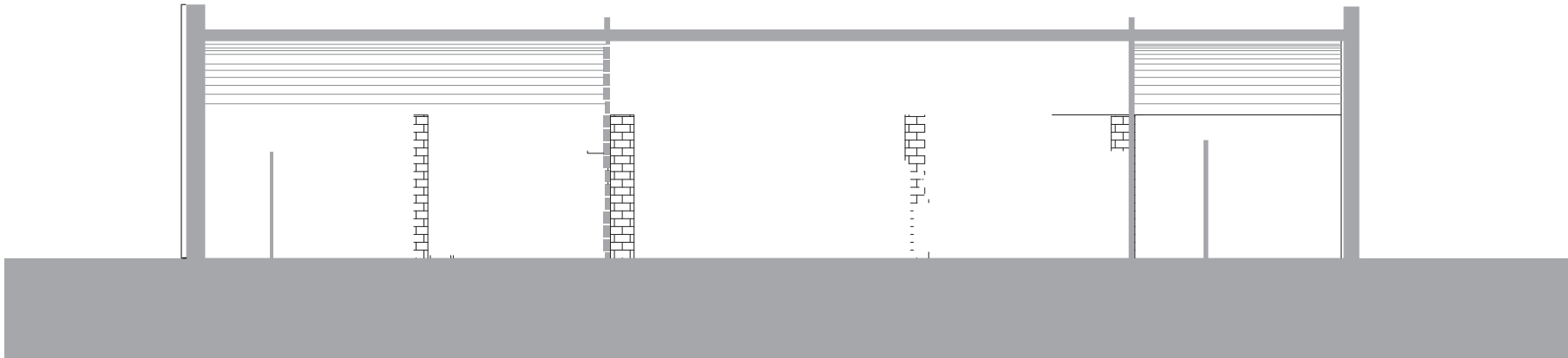
& BTU & MFWBU  
4DBMF

# 6 \* - % \* / ( 4 & \$ 5 \* 0 /



4FDUJPO —"

4FDUJPO —#







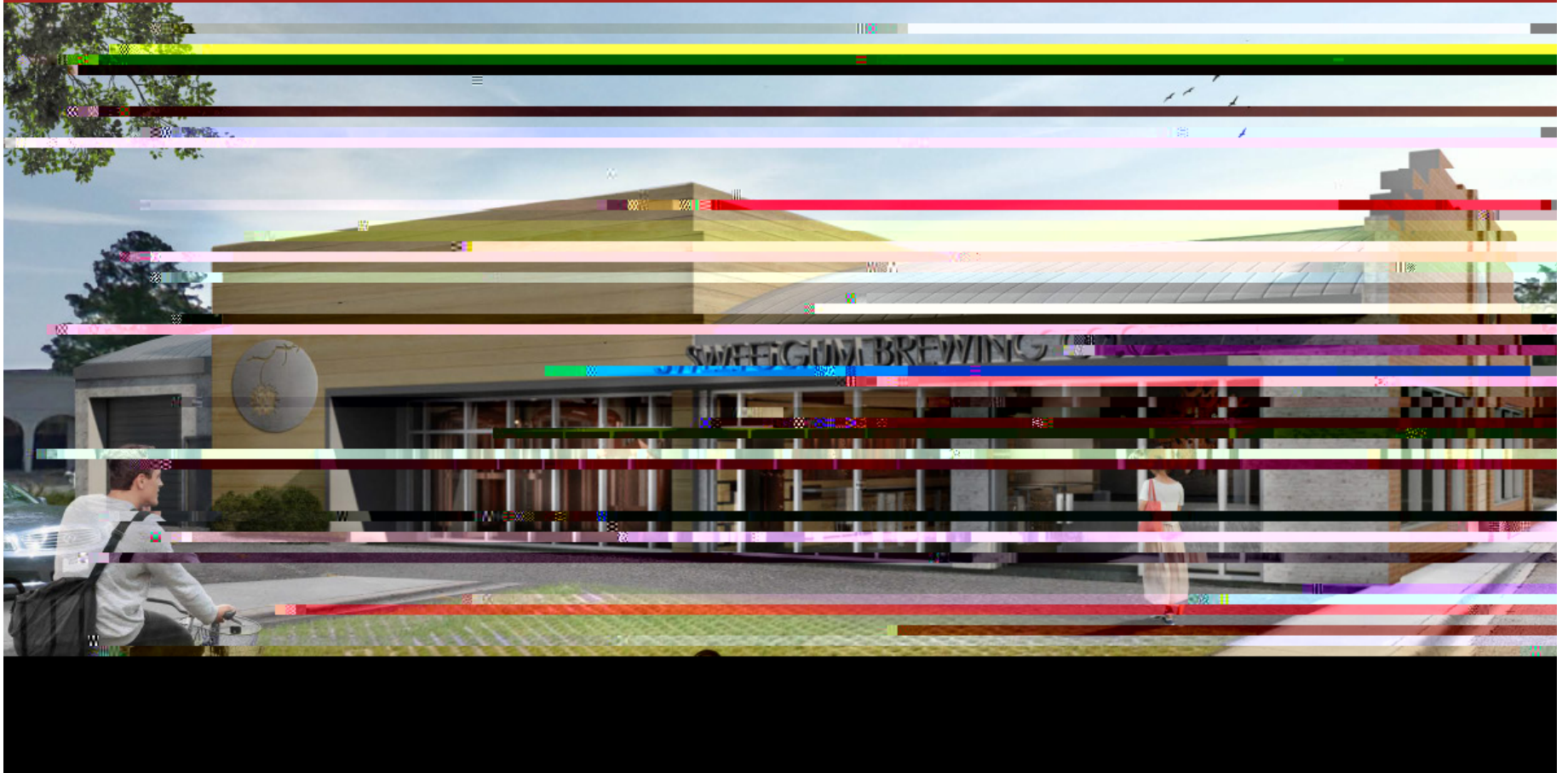






& 9 5 & 3 \* 0 3 3 & / % & 3 & %



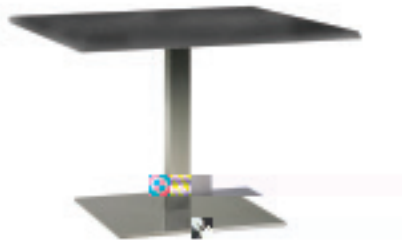


— %BSL HSBZ BMVNJOVN  
— 8IJUF XBMOVU  
— 4UFFM  
— 6OJMPDL UVSGTUPOF  
— \$PMVNCVT #SJD \$PNQBOZ 8FBUIFSFE #SJD  
— 0SJHJOBM CSJD





-PFXFOTUFJO 4BMPNF  
 .PEVMBS -PVOHF 4FBUJOH



-PFXFOTUFJO 4UBJOM  
 4RVBSF #BTF BOE 4RVB

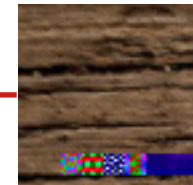
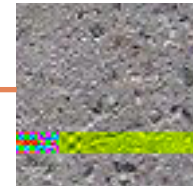


-PFXFOTUFJO  
 5JGGB0Z \$IBJS

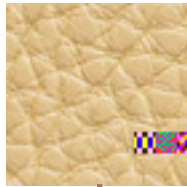
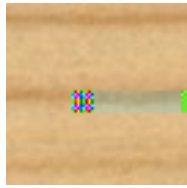


\$BCMF BOE 3PE  
 4IFMWJOH 4ZTUF

\* / 5 & 3 \* 0 3 3 & / % & 3 & %





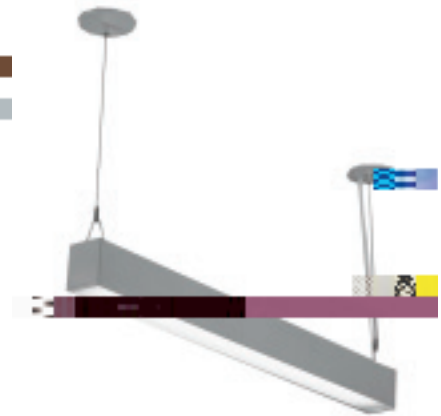


8IJUF XBMOVU XPPE PO GFBUVSF XBMM

1BUJNB DPQQFS WFOFFS BDDFOU PO XIJUF XBMOVU GFBUVSF XB

-PVOHF TFBUJOH VQIPMTUFSZ .PNFOUVN CSBOE

- \* ( ) 5 \* / (








≡ \$ 0 / 4 5 3 6 \$ 5 \* 0 / " / " - : 4 \* 4

'PS UIJT SFOPWBUJPO XF  
PSJHJOBMMZ EFTJHOFE B CVNQ PVU

\$ 0 / 4 5 3 6 \$ 5 \* 0 / # 6 % ( & 5

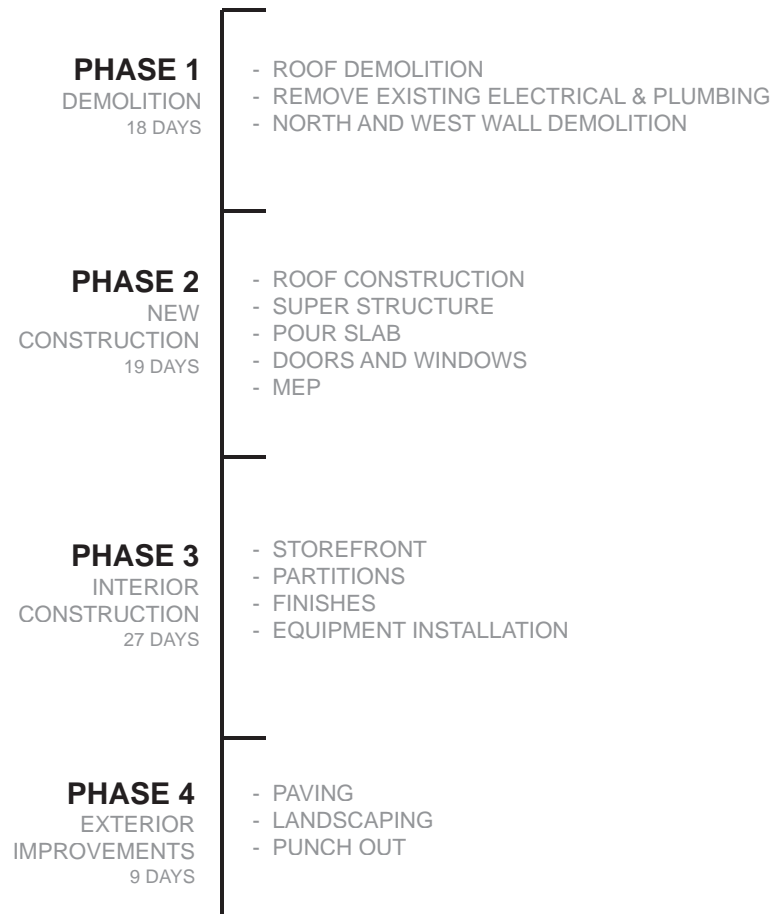


5,900SF		\$70.26/sf
	General Conditions	46,117
S	ite work	37,513
	Concrete	22,790
	Masonry	37,151
S	teel	15,991
W	ood and Plastics	10,209
	Thermal and Moisture Protection	23,205
	Doors and Windows	27,227
F	inishes	19,463
	Specialties	5,056
	Equipment	5,000
33%	MEP	88,252
6%	Architect Fee	16,045
7%	O&P	18,720

4 \$ ) & % 6 - &

NET COST : \$ 267,400  
TOTAL COST : \$ 415,000

70.62 / SF







- & & % \$ ) & \$ , - \* 4 5

### LEED 2009 for New Construction and Major Renovations

SWEETGUM MICROBREWERY

#### Project Checklist

21		Possible Points: 26	
Y	? N		
Y		Prereq 1	
1		Credit 1	1
5		Credit 2	5
		Credit 3	Brownfield Redevelopment
6		Credit 4.1	6
1		Credit 4.2	1
		Credit 4.3	Alternative Transportation—Low-Emitting and Fuel-Efficient Vehicles
2		Credit 4.4	2
1		Credit 5.1	Site Development—Protect or Restore Habitat
1		Credit 5.2	Site Development—Maximize Open Space
1		Credit 6.1	Stormwater Design—Quantity Control
1		Credit 6.2	Stormwater Design—Quality Control
1		Credit 7.1	Heat Island Effect—Non-roof
		Credit 7.2	
1		Credit 8	Light Pollution Reduction
7		Possible Points: 10	
Y		Prereq 1	Water Use Reduction—20% Reduction

2 <th colspan="2">Possible Points: 15 </th>		Possible Points: 15	
Y	? N		
2		Credit 4	1 to 2
2		Credit 5	1 to 2
1		Credit 6	Rapidly Renewable Materials
1		Credit 7	1
10		Indoor Environmental Quality	
7		Possible Points: 15	
Y		Prereq 1	Minimum Indoor Air Quality Performance
Y		Prereq 2	Environmental Tobacco Smoke (ETS) Control
		Credit 1	Outdoor Air Delivery Monitoring
1		Credit 2	Increased Ventilation
1		Credit 3.1	Construction IAQ Management Plan—During Construction
1		Credit 3.2	
1		Credit 4.1	Low-Emitting Materials—Adhesives and Sealants
1		Credit 4.2	Low-Emitting Materials—Paints and Coatings
1		Credit 4.3	Low-Emitting Materials—Flooring Systems
1		Credit 4.4	Low-Emitting Materials—Composite Wood and Agrifiber Products
1		Credit 5	Indoor Chemical and Pollutant Source Control
1		Credit 6.1	Controllability of Systems—Lighting

